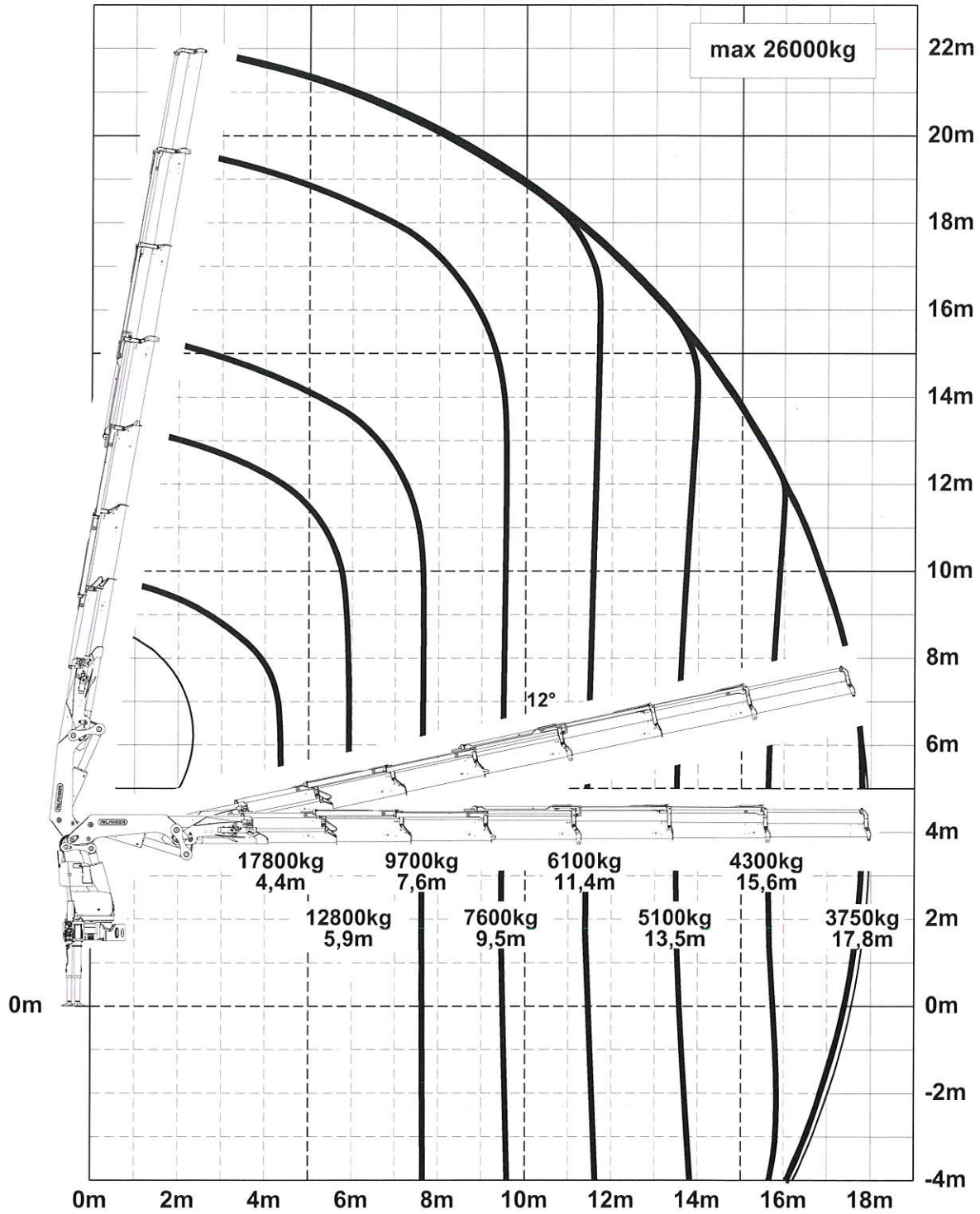


PK 92002 SH

Lifting capacity diagram PK 92002-SH F

07/2012 020.06200

Subject to change, production tolerances have to be taken into account.



Symbolic crane figure, indications at 20° main boom position & load arm in horizontal position



For Rope winch load capacity refer to page

Page 020.31100 2.5t

Page 020.32100 3.5t

PK 92002 SH

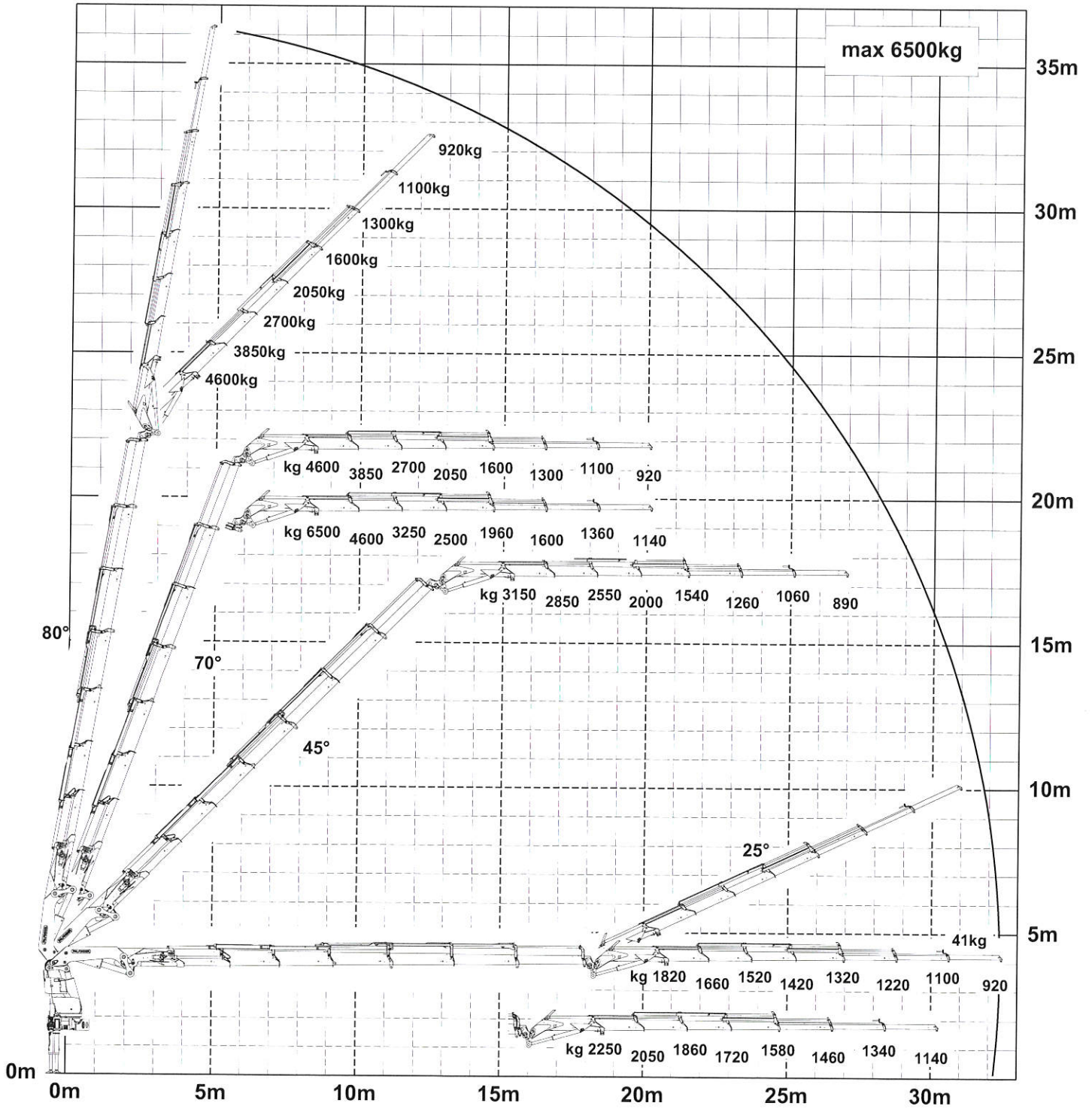
Lifting capacity diagram PK 92002-SH F PJ170 EJV1 DPS+

07/2012

020.14200

Subject to change, production tolerances have to be taken into account.

DPS plus
Dual Power System



When using mechanical boom extensions, the loads, shown on the charts need to be reduced by the weight of these extensions. Symbolic crane figure, indications at 20° main boom position & load arm in horizontal position



For Rope winch load capacity refer to page

Page 020.31100 2.5t

Page 020.32100 3.5t